



The D200 is used to lower pipeline pressure to a pre-set value in water system and building service applications.

Automatically, quietly and smoothly control down stream pressure, from no flow to fully open flow, regardless of varying inlet pressure and down stream demand.

Features:

- Hydraulically operated, accurate and repeatable pressure control.
- Simple, reliable and easy to mount and maintain.
- Easy to service without removal from the line.
- Built in Nylon reinforced diaphragm for strength and accuracy.
- With corrosion resistant stainless steel stem.
- Pressure reducing pilot features easy operation and accurate pressure control.
- Top and bottom guided stem and diaphragm assembly for long life and reliable performance.
- Vulcanized rubber disc for reliable operation.
- No seat ring obstruction for better flow efficiency and lower headloss.
- All iron components are fusion epoxy bonded for corrosion resistance.

Field Services:

Suitable for water supply, fire-fighting & Irrigation System

Technical Data:

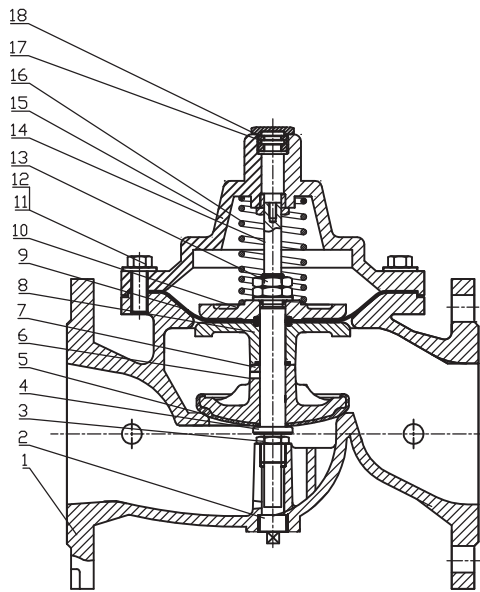
Size: DN 50mm to DN 200mm
Pressure ratings: PN10, PN16
Temperature: -10 °C to 80 °C
Suitable Medium: Water
End connections: PN10/PN16
Consult factory for other type or PN25.



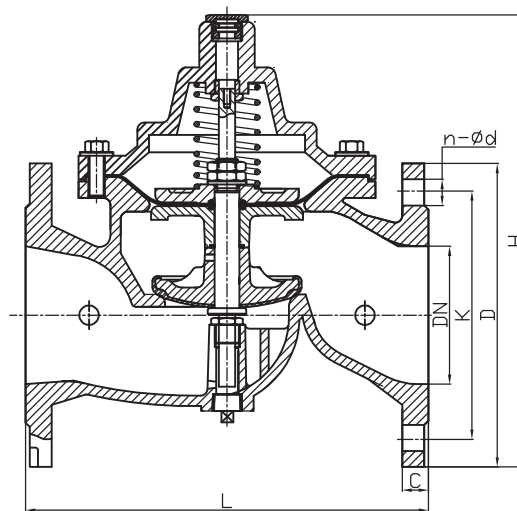
D200 - Pressure Reducing Valve

Main Valve body

Materials



No	Part Names	Material	Standard
1	Body	Ductile Iron	ASTM A536
2	Screw Plug	Stainless Steel	AISI 304
3	Bottom Screw Guide	Bronze	ASTM C51900
4	O-Ring	Rubber	NBR
5	Disc	Ductile Iron+Rubber	EPDM
6	Screw	Stainless Steel	AISI 304
7	O-Ring	Rubber	NBR
8	Lower Plate	Ductile Iron	ASTM A536
9	Diaphragm	Nylon Reinforced Rubber	EPDM+Nylon Fabric
10	Upper Plate	Ductile Iron	ASTM A536
11	Bolt	Stainless Steel	AISI 304
12	Washer	Stainless Steel	AISI 304
13	Nut/Washer	Stainless Steel	AISI 304
14	Stem	Stainless Steel	AISI 304
15	Bonnet	Ductile	ASTM A536
16	Spring	Stainless Steel	AISI 304
17	Top Screw	Bronze	ASTM C51900
18	O-Ring	Rubber	NBR



Demension

Unit: mm

DN	Model/No.	L	D		K		C		n-Ød		H
			PN10	PN16	PN10	PN16	PN10	PN16	PN10	PN16	
50	D100-0050	203	165		125		19		4-Ø19		235
65	D100-0065	216	185		145		19		4-Ø19		258
80	D100-0080	241	200		160		19		8-Ø19		289
100	D100-0100	292	220		180		19		8-Ø19		328
150	D100-0150	356	285		240		19		8-Ø23		427
200	D100-0200	495	340		295		20		8-Ø23	12Ø23	550

Reducing Pilot - PRVP

Pressure Reducing Pilot

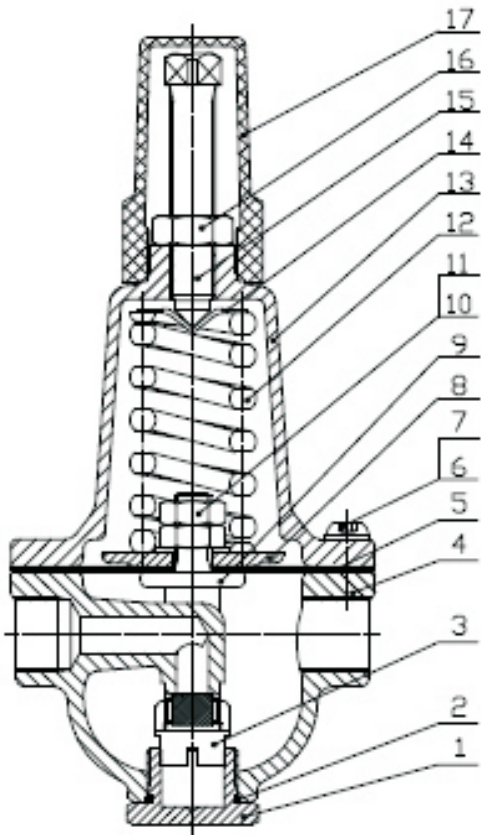
Model No.: PRVP

Pressure Range: 0.5-10 bar

(Adjustable): 2-16bar

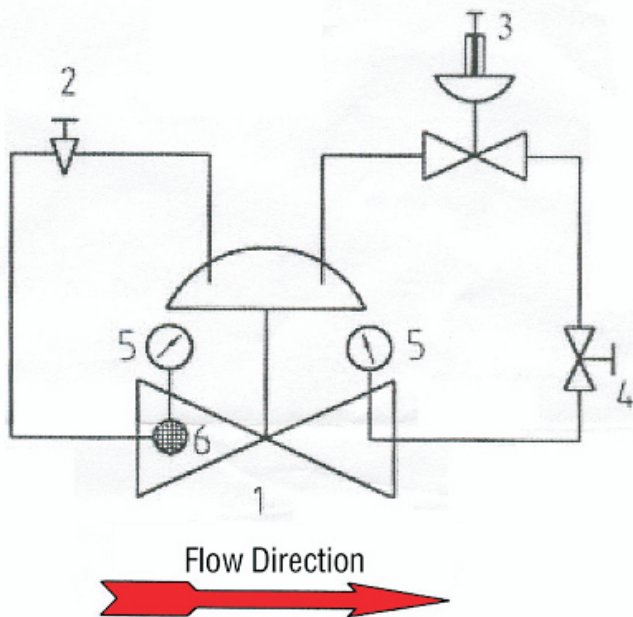
Connection: ISO7-Rc3/8"

Parts List & Demension



No	Part Names	Material	Standard
1	Screw Plug	Stainless Steel	AISI 304
2	O-Ring	Rubber	NBR
3	O-Ring	Rubber	NBR
4	Body	Stainless Steel	AISI 304
5	Diaphragm	Nylon Reinforced Rubber	EPDM+Fiber Class
6	Screw	Stainless Steel	AISI 304
7	Washer	Stainless Steel	AISI 304
8	Plate	Stainless	AISI 304
9	Hanger	Stainless Steel+Rubber	AISI 304+NBR
10	Nut	Stainless Steel	AISI 304
11	Washer	Stainless Steel	AISI 304
12	Main Spring	Stainless Steel	AISI 304
13	Bonnet	Stainless Steel	AISI 304
14	Spring Cover	Stainless Steel	AISI 304
15	Bolt	Stainless Steel	AISI 304
16	Nut	Stainless Steel	AISI 304
17	Guard	Plastic	ABS

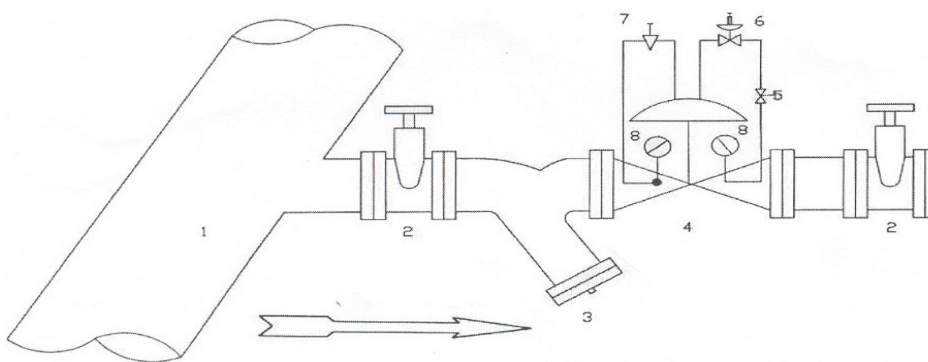
Diagram of Pipe Connection



- 1. Main Valve**
- 2. Needle Valve**
- 3. Pressure Reducing Pilot (PRVP)**
- 4. Ball Valve**
- 5. Pressure Gauge**

Typical Installtion

- 1. Main Supply Line**
- 2. Isolation Valve**
- 3. Y-Strainer**
- 4. Main Valve**
- 5. Ball Valve**
- 6. Pressure Relief/Sustaining Pilot**
- 7. Needle Valve**



Distributor :
SAN HÀ trading-services Co. Ltd.
www.valves-pumps.com.vn