



**ROTARY VANE WHEEL DRY - DIAL MAGNET - DRIVE
COLD WATER METTER**

Medidor de Agua, Registro seco, Transmision magnetica,
Tipo Volante, para agua fria

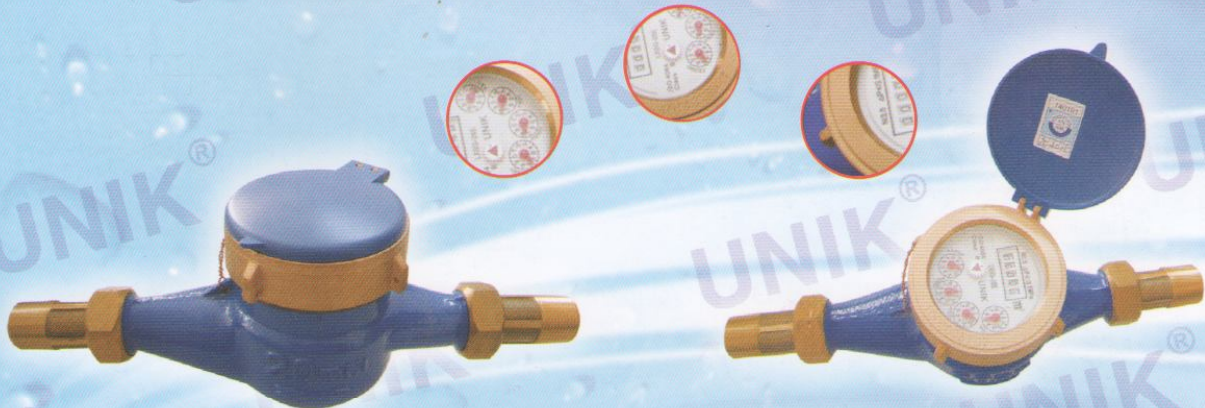
LXSG - 15E ~ 50E

Feature:

- Dry-dial, Magnetic drive, Resistance to exterior magnet interference
- Multi-jet
- Selected high quality materials for steady & reliable characteristic
- Vacuum sealed register ensures the dial kept free from fog and keep the reading clear in a long term service
- Measuring accuracy conform to ISO 4064 class B Standard
- Universal use. Easy for interchange & maintenance

Caracteristicas:

- Registro seco, Transmision magnetica, Resistente a la exterior interferencia magnetica
- Chorro multiple
- Seleccion de material de alta calidad que dejia estable y segura la funcion
- El registro sellado vacio puede evitar el problema de condensacion y puede mantener clara la lectura durante largo tiempo de trabajo
- La precision de medicion esta conforme a la norma ISO 4064 clase B
- Uso universal. Facil mantenimiento y reparacion.



This range of water meter is used to measure the total quantity of cold potable water which consumed in household or a resident unit, passing through the pipeline.

Esta serie de medidores de agua esta disenada para la medicion del consumo de agua fria pasada por la tuberia de agua potable en una casa o un departamento.

Compliance with standard: ISO 4064 Class B
Conforme a la norma : ISO 4064 Clase B

★ MAIN TECHNICAL DATA

Especificaciones técnicas

Meter Size Dia DN (mm)	Class	qs	qp	qt	qmin	starting Flow	Min Reading lectura	Max Reading lectura
		Overload Flow	Nominal Flow	Transitional Flow	Min Flow			
		m ³ /h		l/h			m ³ /h	
15	B	3	1.5	120	30	14	0.0001	99999
20	B	5	2.5	200	50	16	0.0001	99999
25	B	7	3.5	280	70	19	0.0001	99999
32	B	12	6.0	480	120	25	0.0001	99999
40	B	20	10	800	200	56	0.001	99999
50	B	30	15	3000	450	70	0.001	99999

★ INDICATING ERROR

At low zone is $\pm 5\%$ from minimum flow rate (qmin) to transitional (qt) exclusive boundary

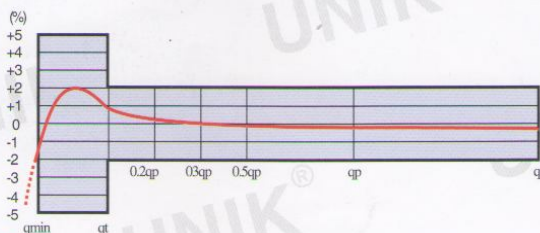
At high zone is $\pm 2\%$ from transitional flow rate (qt) to overload flow rate (qs)

★ ERROR MAXIMO PERMITIDO

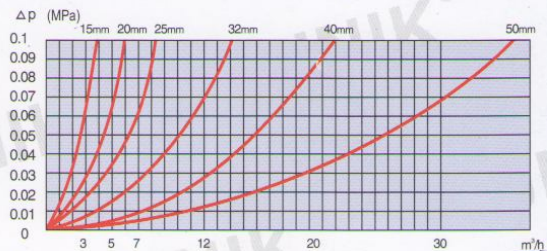
De caudal mínimo a caudal de transición excluido $\pm 5\%$

De caudal de transición a caudal sobre carga incluido $\pm 2\%$

★ FLOW - ERROR CURVE (Grafico de precision de caudal)

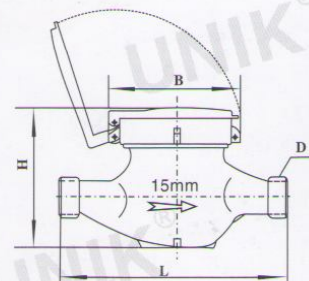


★ HEAD LOSS CURVE (Grafico de perdida de carga)



★ DIMENSIONS AND WEIGHT (Dimension y peso)

Meter Size Dia DN (mm)	L Length	B Width	H Height	Connecting Thread D	Weight kg
	mm				
15	160/250	99	104	G ³ / ₄	1.5/1.6
20	200/300	99	106	G1	1.7/1.8
25	220/340	104	120	G1 ¹ / ₄	2.6/2.4
32	230/350	104	120	G1 ¹ / ₂	2.8/2.7
40	250/370	125	155	G 2	5.4/4.5
	300	125	155	G2 ¹ / ₂	7.2
50	270	165	175	FLANGE CONNECTING CONFORM TO GB/T17241.2-1998 D=165 D1=125	14



★ Working Condition:

Water temperature: $\leq 40^{\circ}\text{C}$
Working pressure: 1, $\leq 1.0\text{MPa}$
2, $\leq 1.6\text{MPa}$

★ Condition de trabajo:

Temperatura máxima de agua: $\leq 40^{\circ}\text{C}$
Presion máxima de agua: 1, $\leq 1.0\text{MPa}$
2, $\leq 1.6\text{MPa}$

Made in TAIWAN

Made in TAIWAN

Made in TAIWAN

Made in TAIWAN