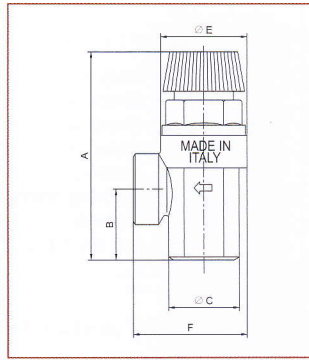


368

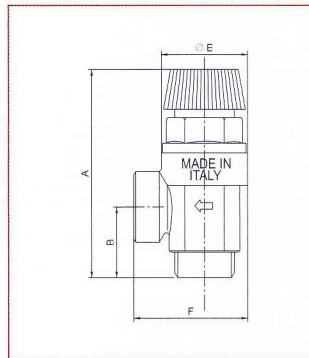
Diaphragm safety relief valve - female/female thread



SIZE	1/2"x1/2"	3/4"x3/4"	1"x1"	
A (mm)	70.5	75.5	85	Body in nickel-plated brass. Diaphragm: EPDM. Spring: stainless steel.
B (mm)	24	27	32	Nominal pressure: 10 bar. Maximum working temperature: 110°C
C (mm)	25.5	32.5	38	Opening overpressure: 20%. Closing differential: 20%.
E (mm)	31.5	32	38	Available settings: 1,5 - 1,8 - 2,5 - 3 - 4 - 6 bar.
F (mm)	41.5	47	54	Available sizes: 1/2"x1/2", 3/4"x3/4", 1"x1".
WORKING PRESSURE Kg/cm2 bar	10	10	10	Threads: ISO228 (equivalent to DIN EN ISO 228 and BS EN ISO 228).
WORKING PRESSURE psi	145	145	145	

369

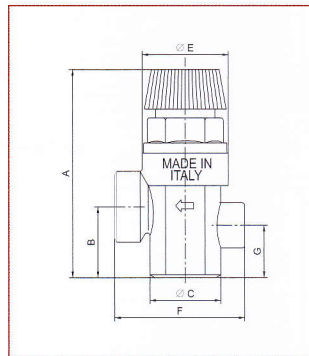
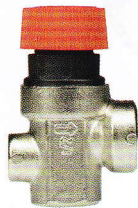
Diaphragm safety relief valve - male/female thread



SIZE	1/2"x1/2"	
A (mm)	70.5	Body in nickel-plated brass. Diaphragm: EPDM. Spring: stainless steel.
B (mm)	23	Nominal pressure: 10 bar. Maximum working temperature: 110°C.
E (mm)	31.5	Opening overpressure: 20%. Closing differential: 20%.
F (mm)	41	Available settings: 1,5 - 1,8 - 2,5 - 3 - 4 - 6 bar.
WORKING PRESSURE Kg/cm2 bar	10	Available sizes: 1/2"x1/2".
WORKING PRESSURE psi	145	Threads: ISO228 (equivalent to DIN EN ISO 228 and BS EN ISO 228).

368M

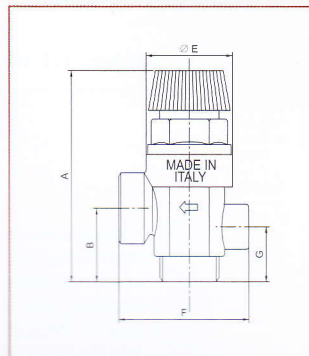
Diaphragm safety relief valve with pressure gauge connection - female/female thread



SIZE	1/2"x1/2"	
A (mm)	70.5	Body in nickel-plated brass. Diaphragm: EPDM. Spring: stainless steel.
B (mm)	24	Nominal pressure: 10 bar. Maximum working temperature: 110°C.
C (mm)	25.5	Opening overpressure: 20%. Closing differential: 20%.
E (mm)	31.5	Available settings: 1,5 - 1,8 - 2,5 - 3 - 4 - 6 bar.
F (mm)	46	Available sizes: 1/2"x1/2".
G (mm)	18	Pressure gauge connection: 1/4".
WORKING PRESSURE Kg/cm2 bar	10	Threads: ISO228 (equivalent to DIN EN ISO 228 and BS EN ISO 228).
WORKING PRESSURE psi	145	

369M

Diaphragm safety relief valve with pressure gauge connection - male/female thread



SIZE	1/2"x1/2"	
A (mm)	73	Body in nickel-plated brass. Diaphragm: EPDM. Spring: stainless steel.
B (mm)	26	Nominal pressure: 10 bar. Maximum working temperature: 110°C.
E (mm)	31.5	Opening overpressure: 20%. Closing differential: 20%.
F (mm)	46	Available settings: 1,5 - 1,8 - 2,5 - 3 - 4 - 6 bar.
G (mm)	19.5	Available sizes: 1/2"x1/2".
WORKING PRESSURE Kg/cm2 bar	10	Pressure gauge connection: 1/4".
WORKING PRESSURE psi	145	Threads: ISO228 (equivalent to DIN EN ISO 228 and BS EN ISO 228).



ART.
368-
368M-
369-
369M

820
820C
820C
950
950C
950S
950S
950S
950R
822G
822S