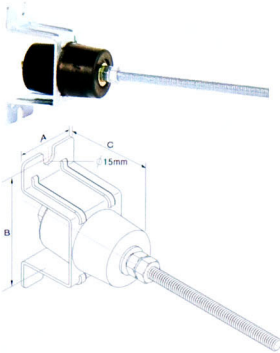


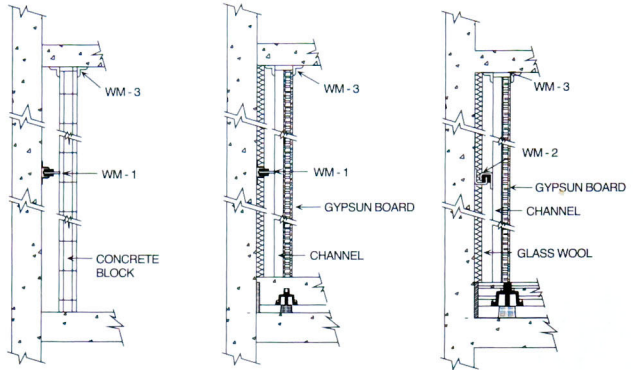
## WM-1 (ISOLATED WALL SYSTEM)



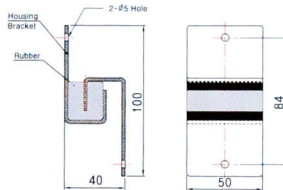
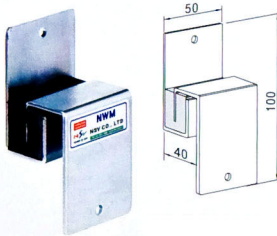
As shown below the transmission loss value, When used with an isolated wall system and isolated ceiling system instead of with a jack-up system alone, more transmission loss can be expected.

1. With 100mm blocks (naturally finished) : -37dB
2. With 100mm blocks (both sides finished with 13mm plaster) : -43dB
3. With revetment (both sides finished with 13mm plaster) : -40dB
4. Building 1B bricks (both sides finished with gyps plaster) : -50dB
5. Building 1B bricks (double walled) : -55dB

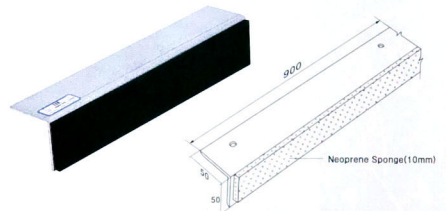
TYPE	Dimension(mm)			Price (US \$)
	A	B	C	
WM-1-50	50	95	70	20
WM-1-150	70	110	70	35



## WM-2



## WM-3



## SJUM (SPRING JACK UP MOUNT)

### ► Features

When vibration becomes more serious problem than noise, namely in the vibration frequency below 20Hz or vibration with wide vibrational band in below 30Hz, ordinary jack up floating system should not be used. In this case, instead of rubber mount, vibration spring mounts with a static displacement of 15~20mm must be used, thus maintaining the natural frequency 3.6 to 4.0Hz.

### DIMENSION & SELECTION GUIDE BY LOADS

Model	Capacity(kgf)	Static Deflection (mm)	A (mm)	H(mm)
SJUM-200	200	25	100	100
SJUM-300	300	25	100	100
SJUM-400	400	25	100	100
SJUM-500	500	25	100	100
SJUM2-200	200	50	138	150
SJUM2-300	300	50	138	150
SJUM2-400	400	50	138	150
SJUM2-500	500	50	138	150

