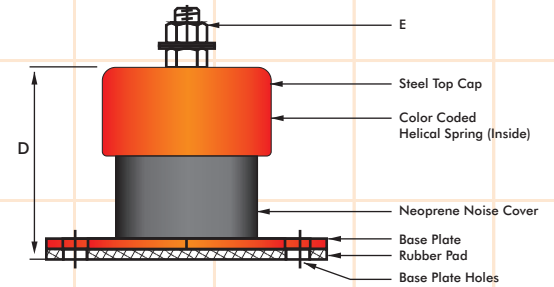
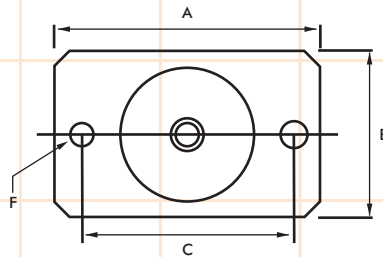


Specifications :

A unique range of spring mountings designed primarily for building services applications where the control of low frequency vibrations and noise emanating from mechanical plants is of paramount importance.

The benefits of a combined rubber and steel housing for the spring have helped establish the KESI mount as an industry standard accepted by specifier, equipment manufacturers and mechanical services installers.



Design Feature :

- ⇒ Nitrile rubber (oil resistant) lower spring housing eliminates the possibility of metallic continuity and ensures excellent acoustic performance.
- ⇒ Fully enclosed captive assembly protects the spring and controls transient motion.
- ⇒ All steel components are zinc plated.
- ⇒ Nominal 25 & 50 mm deflection color coded helical steel springs to BS1726 Class B.
- ⇒ Laterally stable Springs with 50% overload capacity.
- ⇒ Simple single screw height adjustment.
- ⇒ Ribbed Rubber pads on base.
- ⇒ Color coded Spring for easy identification.
- ⇒ Stainless Steel and Zinc Electroplated variants available.

Typical Applications :

- ⇒ Axial and Centrifugal Fans.
- ⇒ Air Handling Units.
- ⇒ Chillers and Cooling Towers.
- ⇒ Rotary and Multi Cylinder Compressors.
- ⇒ Mechanical Test Rigs.
- ⇒ Isolation of Sensitive Equipment.
- ⇒ Blowers
- ⇒ Inertia Bases
- ⇒ Diesel Gensets

Part No.	Colour Code	Rated Load (kg)	Deflection At Rated Load (mm)	Dimensions (mm)						
				A	B	C	D	E	F (mm)	
EFESI 25/30	Yellow	30	25							
EFESI 25/60	Green	60	25	140	100	110	97	M10	12.5	
EFESI 25/100	Blue	100	25							
EFESI 25/160	White	160	25							
EFESI 25/250	Red	250	25							
EFESI 25/200	Red	200	25							
EFESI 25/300	Purple	300	25							
EFESI 25/400	Grey	400	25							
EFESI 25/500	Orange	500	25	160	100	145	130	M12	12.5	
EFESI 25/600	Brown	600	25							
EFESI 25/700	Orange/Black*	700	25							
EFESI 25/800	Brown/Black*	800	25							
EFESI 50/100	Yellow	100	50							
EFESI 50/200	Green	200	50							
EFESI 50/300	Blue	300	50	160	100	140	162	M12	12.5	
EFESI 50/400	White	400	50							
EFESI 50/500	Red/Black*	500	50							

- ⇒ Due to policy of continual improvement, the specifications are subject to change without prior notice.
- ⇒ Measurements are subject to 5% tolerance.
- ⇒ To achieve good sound suppression do not over load fitting.