

SPECIFICATION

- TS 3148 Turkish Standard Institute approved.
- ISO 9001 Quality System Management.
- Full Port for maximum flow.
- 24h 100% seal test guaranteed.
- Chrome plated brass ball for longer life.
- Screwed end BSPT.
- 25 Bar (Kg/cm²) up to 4" working pressure.
- Dual sealing system allows valve to be operated in either directions making installation easier.
- PTFE Gasket and EPDM O-ring for maximum security.
- Can be used in a wide range of industrial and agricultural applications.
- Steel handle with thick PVC coating.
- Temperature -10°C + 120°C.

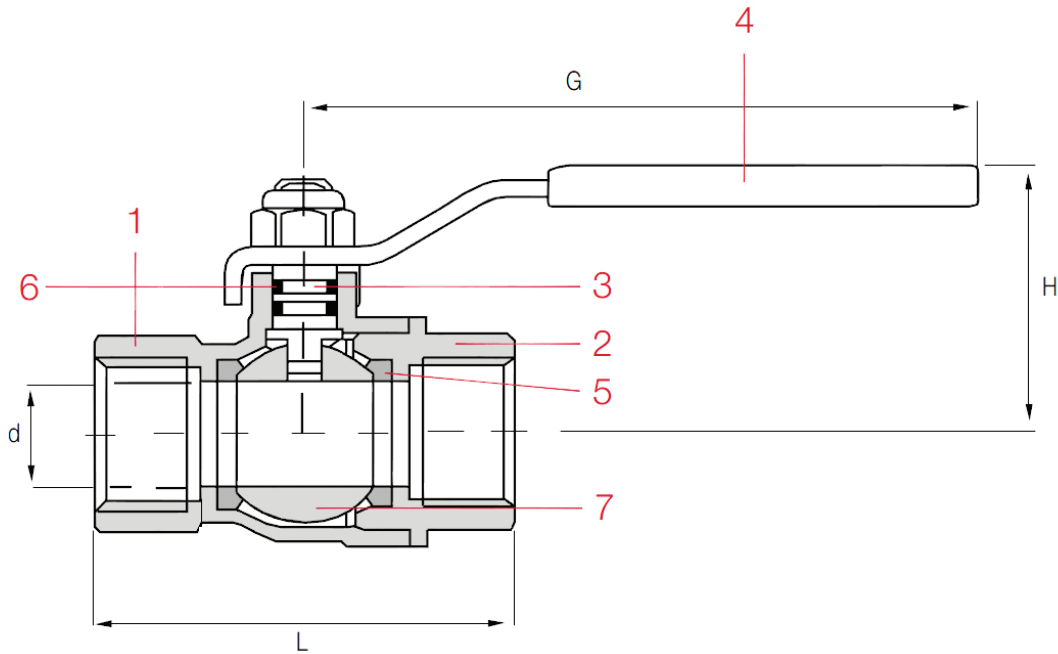
INSTALLATION AND OPERATING INSTRUCTIONS

- Our product is used with non-acidic fluid systems like water, air, petroleum products and alcohol.
- Before installation clean the piping system against sand and residue.
- Use the valve with fully opened or closed position. You need to turn the handle 90°.
- Assure that the length of the threads on the pipe is shorter than the depth of the valve threads.
- For the safety of the product, using together with a filter will be beneficial.

WARNINGS

- Install the valve when it is fully closed position.
- Do not use with flammable gas like oxygen and similar gases.
- Do not place the valve under concrete.
- To use the valve as throttling purpose may damage sealing rings.

DRAWING



MATERIALS

No	Component	Material
1	Body	MS58 Brass (CuZn39Pb2) , Nickel Plated
2	Cover	MS58 Brass (CuZn39Pb2) , Nickel Plated
3	Stem	Steel (PVC coated)
4	Hand lever	St 37
5	Seal ring	TEFLON
6	O-ring	EPDM
7	Ball	MS 58 Brass (CuZn39Pb2), Chrome Plated

DIMENSIONS

Size		d (mm)	L (mm)	H (mm)	G (mm)
DN	INCH				
15	1/2"	14	60	37	95
20	3/4"	19	70	53	115
25	1"	24	85	55	115
32	1 1/4"	30	100	59	115
40	1 1/2"	38	110	77	155
50	2"	47	130	90	155
65	2 1/2"	63	155	107	230
80	3"	80	180	120	230
100	4"	98	215	135	230

KVS VALVE, INC.

34572 Hoca Hanım v Karaköy / İstanbul/TÜRKİYE

Tel: +90.212.259.6687 ; Fax : +90 (252) 316 88 43 (pbx)

Website: <http://www.kvsvalve.com>

