



# TD88

## Volumetric class C residential water meter

- ▶ True Class C
- ▶ Robust Construction
- ▶ Easy Reading



TD88 is a Class C piston type meter with liquid-filled register for residential applications. Designed, engineered and tailored for the modern requirements of water utilities, its high-resolution and robustness ensure accurate billing over time. The key ingredients to reduce unaccounted water:

### The Technology

TD88 combines the advantages of piston type technology together with the proven reliability of the liquid-filled register. The use of up to date technology and processes, combined with high-quality materials ensures stable accuracy in any environment.

### Metrological Performance

- ISO 4064 class C in all positions.
- Very low starting flow allows leakage detection.

### Climate Resistant

- The design resists ambient temperature up to 50°C and 16 bar working pressure.
- Perfect operation in flooded pitholes.
- The liquid-filled register prevents moisture entry.

### Tamperproof

- The robust all brass body protects from clamps, hammer and other outside shocks.
- Magnetic fraud is impossible due to the mechanical transmission.
- The unique construction of its register mounting protects against vandalism through the thick register window.

## Construction

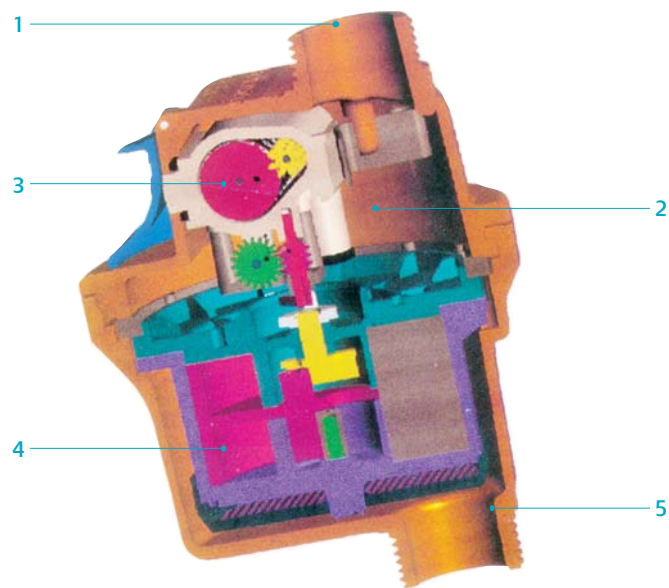
Non-Return Valve can be fitted on the Outlet ①.

Forged Brass Upper Body ②.

Liquid Filled Register ③.

Piston Type Measuring Chamber ④.

Forged Brass Lower Body ⑤.



## Easy to Install

- The meter compactness enables mounting in the smallest areas
- The offset inlet/outlet pipes allow installation adjacent to the wall
- Flats on the meter body allow easy fitting
- The volumetric technology guarantees perfect accuracy in any position

## Easy to Read

TD88 register combines the following advantages:

- Distinct black and white contrast for the 4 m<sup>3</sup> digits
- Clear red and white contrast for the 4 sub-multiples digits
- High-resolution index with a minimum scale interval of 0.02 l/h
- Engraved serial number close to the register
- Thick glass window for protection against external aggressions
- Register is suitable for electronic calibration

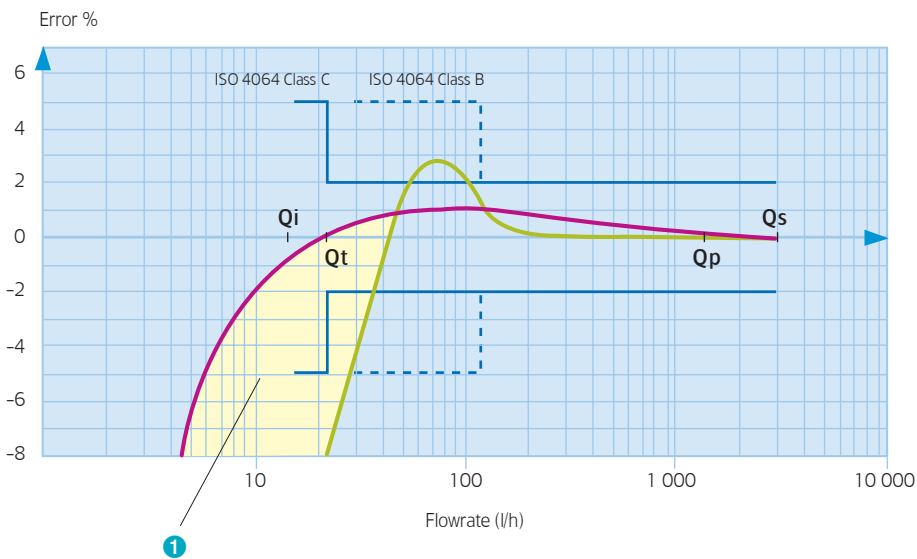


► Register for TD88

## Metrological Characteristics

<b>Nominal diameter (DN)</b>	<b>mm</b>	<b>15</b>
ISO 4064 metrology class		class C all Positions
Maximum flow rate	Qs	m <sup>3</sup> /h 3
Nominal flow rate	Qp	m <sup>3</sup> /h 1.5
Transitional flow rate	Qt (± 2%)	l/h 22.5
Minimum flow rate	Qmin (± 5%)	l/h 15
Starting flow rate		l/h 2.5
Maximum admissible temperature	°C	50
Maximum admissible working pressure	bar	16
Pressure loss at	Qp	bar 0.2
	Qs	bar 0.8
Indicator range	m <sup>3</sup>	9 999
Minimum scale interval	l	0.02

## Typical Curve



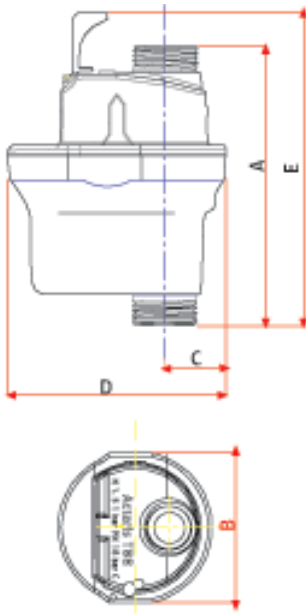
- TD88 typical curve
- Typical curve of a class B meter

### Extended Accuracy

- 1 The true class C characteristics of the TD88 combined with a very low starting flow, allows the registration of the smallest flows.
- 2 The excellent long-term metrology of the TD88 secures the measurement of your water supply over time.



## ► Dimensions



## Options

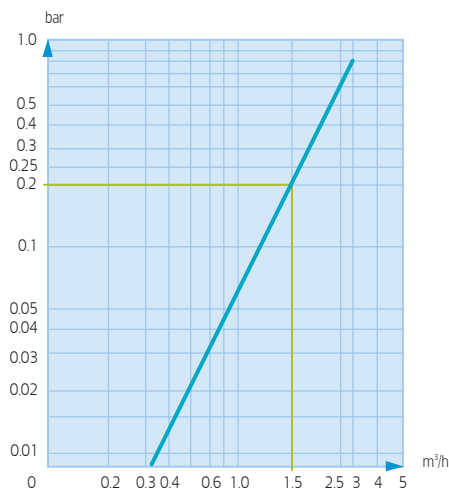
TD88 meter may be fitted with:

- Non return-valve for outlet
- For the pulse output device option, please contact us

## Dimensions

<b>Nominal diameter (DN)</b>	<b>mm</b>	<b>15</b>
Meter thread	inches	G <sup>3</sup> / <sub>4</sub>
	mm	20 x27
<b>A standard</b>	<b>mm</b>	<b>115</b>
<b>B</b>	<b>mm</b>	<b>87.9</b>
<b>C</b>	<b>mm</b>	<b>24.7</b>
<b>D</b>	<b>mm</b>	<b>90</b>
<b>E</b>	<b>mm</b>	<b>128.5</b>
<b>Weight</b>	<b>kg</b>	<b>0.920</b>

## Head Loss



**PT. Mecindo**  
Plot 6B-2  
East Jakarta Industrial Park (EJIP)  
Lemah Abang, Bekasi 17550  
Indonesia  
**tel** +62 21 897 0270  
**fax** +62 21 897 0271

**Actaris Pty. Ltd.**  
8 Rosberg Road  
Wingfield, Adelaide 5013  
South Australia  
Australia  
**tel** +61 8 8359 0444  
**fax** +61 8 8359 1441

**Metertek Sdn. Bhd.**  
No. 4, Jalan Sejahtera 25/124, Section 25,  
Axis Premier Industrial Park,  
40400 Shah Alam, Selangor Darul Ehsan,  
Malaysia  
**tel** +60 3 5121 2833  
**fax** +60 3 5121 2849

**Actaris China**  
RM 702, Lido Office Tower  
Lido Place Jichang Road  
Chaoyang District, Beijing 100004  
People's Republic of China  
**tel** +86 10 6430 1186  
**fax** +86 10 6437 6905

**Actaris Singapore Pte. Ltd.**  
12, Lorong Bakar Batu,  
#06-11  
Singapore 348745  
Singapore  
**tel** +65 6 848 7955  
**fax** +65 6 746 2145

**Actaris India**  
4<sup>th</sup> Fl, The Capital Court  
LSC Phase III, Olof Palme Marg  
Munirka, New Dehli 110067  
India  
**tel** +91 11 2610 6711  
**fax** +91 11 2610 5977